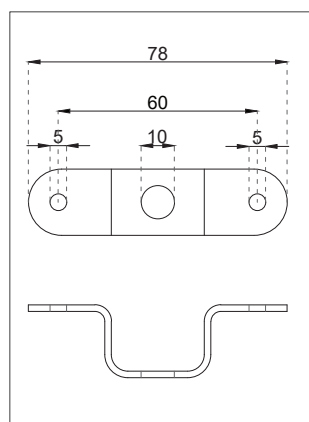
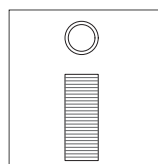


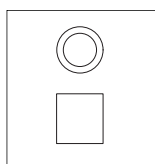
# Flat Ceiling Rose Installation Instructions



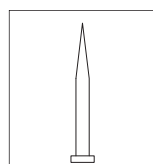
**[1] Mounting element**



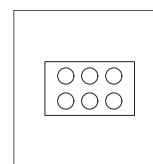
**[2] Thread**



**[3] Nipple**



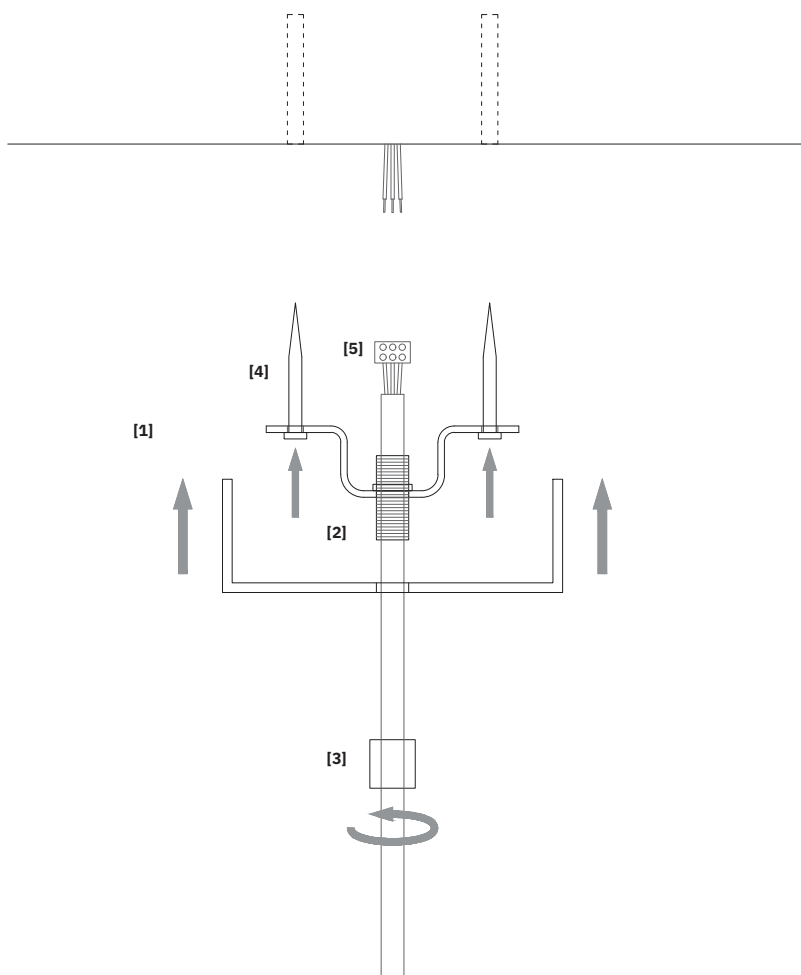
**[4] Wall plugs\***



**[5] Electrical box\*\***

\*The set does not include wall plugs

\*\*For two-core cables, grounding is included in the set



1. Attach the mounting element **[1]** to the ceiling using wall plugs **[4]**.
2. Connect the cable to the power supply using the electrical junction box **[5]**.
3. Position the flat ceiling rose near the ceiling.
4. Tighten the nipple **[3]** onto the elongated thread **[2]** to secure the canopy.

