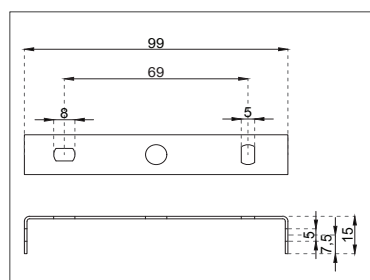
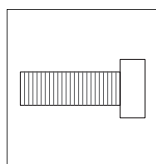


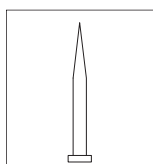
Hemisphere Ceiling Rose Installation Instructions



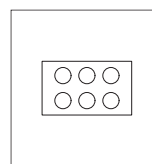
[1] Mounting element



[2] Mounting screws



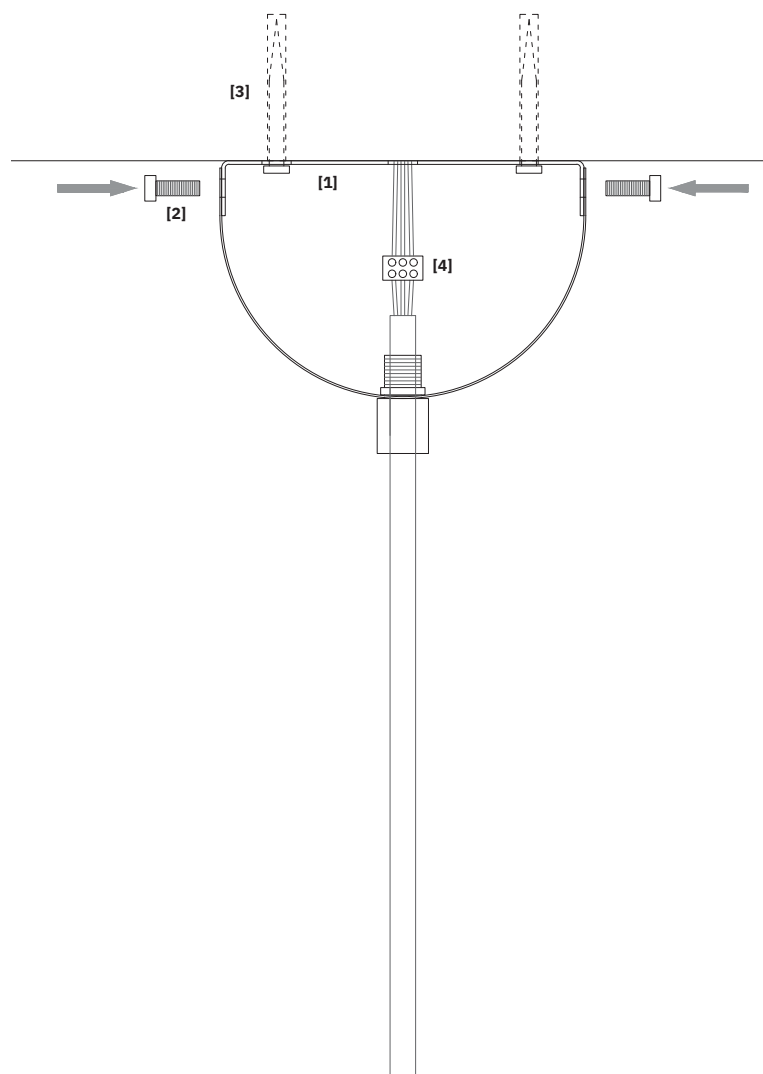
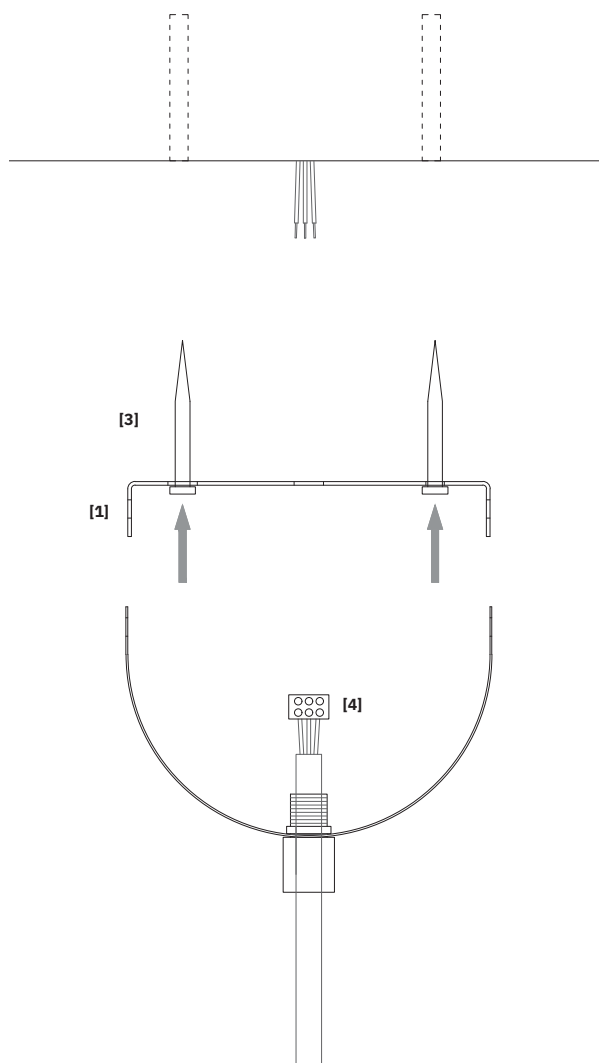
[3] Wall plugs*



[4] Electrical box**

*The set does not include wall plugs

**For two-core cables, grounding is included in the set



1. Attach the mounting element **[1]** to the ceiling using wall plugs **[3]**.
2. Connect the cable to the power supply using the electrical junction box **[4]**.
3. Position the hemisphere ceiling rose near the ceiling and secure it to the mounting element **[1]** using the mounting screws **[2]**.

